

cookplay





Bilbao, January 2025



cookplay

NATURE COEXISTS IN HARMONY
IT IS EVOLUTION AND ADAPTATION
A COMPLEX ORGANISM
YET FREE AND CREATIVE
THAT IS HOW I FACE THE BLANK CANVAS
MY DESIGN IS INTUITIVE
A FREE STROKE THAT GETS TAMED
THE RESULT IS ORGANIC FORMS
THAT ADAPT TO THE HAND
THEY LEAVE THEIR MARKS
AND CREATE AN EMOTIONAL BOND
THE TABLE TRANSFORMS INTO A CANVAS
CULMINATING IN THE CHEF'S CREATION

**SENSORY AND SUSTAINABLE PIECES
MADE TO LAST FOREVER**

WELCOME TO COOKPLAY

Bilbao, January 2025



Cookplay is created by Ana Roquero y Thibault Paoulou in 2014 to redefine the modern table offering a more creative and refreshing tableware being nearest to the sensibility of the new food culture.

Ana brings to her design collections an artistic vision of beauty formal sensuality and originality that is complemented by Thibault's wide knowledge of the horeca market, making possible for the brand to be present, in less than a decade, in the most relevant gastronomic spaces worldwide.



Ana Roquero and her daughter Sara Roquero represent the heart of the brand with their high professional qualifications and shared passion for a design without creative boundaries.

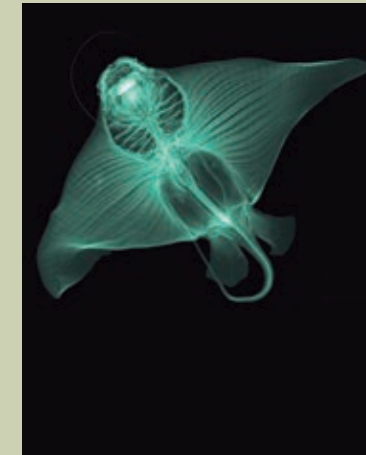
Together they shape functional pieces that also offer emotional connections with the user thanks to their organic and sensual design, Ana with her intuitive hand-drawn gesture and Sara shaping the recognisable Cookplay universe with her polyhedral skills.

OCEANCOOK

IT'S TIME TO MAKE OUR VOICES HEARD FOR
THE PLANET AND WORK TOGETHER FOR A
HEALTHIER ECOSYSTEM

OUR LATEST COLLECTION WANTS TO BE AN
APPEAL TO RECOVER SPECIES THAT ARE IN
SERIOUS DANGER OF EXTINCTION IN THE
MEDITERRANEAN SEA

FOUR ENDANGERED SPECIES



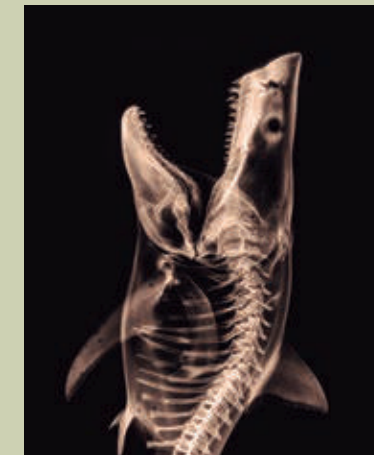
Ray Fish



Seahorse



Eel



White Shark



OCEANCOOK

A PROJECT FOR THE SURVIVAL OF OUR SPECIES

in collaboration with Oceanografic Valencia Foundation



THE PROJECT

THE OCEANOGRÁFIC VALENCIA FOUNDATION
WORKS TOWARDS THE AWARENESS FOR THE
CONSERVATION OF THE MARINE ENVIRONMENT
AT THE MEDITERRANEAN SEA, SPECIFICALLY
PROTECTING THE HIGH NUMBER OF
ENDANGERED SPECIES

WE COME TOGETHER TO HIGHLIGHT THIS
CRITICAL ISSUE WITH A SINGULAR COLLECTION
THAT WILL HELP TO DONATE FUNDS FOR THE
PRESERVATION OF THE SPECIES





THE PROJECT STARTS BY ANSWERING A
PREMISE THAT WAS OUR STARTING POINT:
IS IT POSSIBLE TO REPRESENT ENDANGERED
MARINE SPECIES IN A FORMAT THAT ADAPTS
TO THE NEEDS OF A TABLEWARE?
CAN THEY BE PART OF A GASTRONOMIC
EXPERIENCE?
THE RESULT IS THIS SPECTACULAR
COLLECTION OF DEFIANT FORMS WITH
UNDULANT VOLUMES





Chef: Carlos Urrutikoetxea
Photography: Ariane Roz

UNLIKE OUR DESIGNS FOR COOKPLAY WHERE EVERY PIECE RESPONDS TO A SPECIFIC NEED AND FOLLOWS A VERY RECOGNISABLE FLUID LINE, IN THIS COLLECTION EACH SPECIE HAS BEEN DESIGNED FOLLOWING NOT ONLY THEIR MORPHOLOGY, BUT ALSO BE INSPIRED BY THEIR MOVEMENT AND VISUAL EXPRESSION, GIVING TO THE TABLEWARE SET OUR DISTINGUISHED ORGANIC STYLE.





OCEANCOOK COLLECTION

- Available in porcelain matte finish
- Available in porcelain glazed finish



**OCEANCOOK
Raya Flat**

Matt: 110011
Glazed: 110001
36.5 x 29 x 2.7 cm



**OCEANCOOK
Raya Deep**

Matt: 110012
Glazed: 110002
31.5 x 25 x 4 cm (500ml)



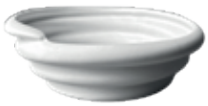
**OCEANCOOK
Raya Dessert**

Matt: 110013
Glazed: 110003
31.5 x 22 x 1.8 cm



**OCEANCOOK
Raya Side**

Matt: 110014
Glazed: 110004
21.5 x 12 x 2.5 cm



**OCEANCOOK
Anguila Bowl**

Matt: 110015
Glazed: 110005
21 x 21 x 7 cm (1000ml)



**OCEANCOOK
Anguila Glass**

Matt: 110016
Glazed: 110006
8.5 x 8.5 x 9.5cm (300ml)



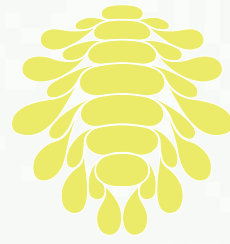
**OCEANCOOK
Seahorse**

Matt: 110017
9.5 x 7.5 x 1.5 cm



**OCEANCOOK
Shark Tooth**

Base: 110008
Top: 110009
14 x 10 x 4.5 cm



—

TEARS COLLECTION WANTS TO EXPRESS AND INTENSIFY THE "TACTILE INTERACTION" FOR A RICH EXPERIENCE AT THE TABLE WITH A UNIQUE TEXTURE IN THE FORM OF TEARS



TEARS

THE REDESIGN OF JOMON AFTER 10 YEARS







Chef: Juan D'Onofrio
Photography: Mikel Ponce



TEARS COLLECTION

· Available in porcelain matt finish



Tears S

10801
12 x 9 x 5



Tears M

10802
16 x 12 x 9



Tears L

10803
18.5 x 14.5 x 7



Tears Drop

10901
10.5 x 7.5 x 2



Tears Single

10902
26 x 12 x 2



Tears Duo

10903
34.5 x 20.5 x 2.3



REX

THE TEXTURE THAT CREATES LIFE





A FREE AND INTUITIVE THREE-DIMENSIONAL
GRAPHIC PATTERN THAT ADAPTS AND
ACCOMMODATES FOLLOWING AN
INSTINCTIVE AND NATURAL PATH



Chef: Alvaro Garrido
Photography: Mikel Ponce



REX COLLECTION

- Available in porcelain matte finish
- Available in porcelain glazed finish



REX XS

Matt: 17011
Glazed: 17001
9 x 7.5 x 1.8



REX S

Matt: 17012
Glazed: 17002
16.5 x 13 x 2.5



REX M

Matt: 17013
Glazed: 17003
26 x 15 x 2.5



REX L

Matt: 17014
Glazed: 17004
29.5 x 24 x 2.5

- Available in porcelain matte finish outside, glazed inside



REX EGG S

17005
9.5 x 8.5 x 8.5 (300ml)



REX EGG S TOP

17006
7.5 x 7 x 3



REX EGG L

17007
15.5 x 13 x 7 (500ml)



REX EGG L TOP

17008
14 x 12 x 4



JELLY

FLUIDITY ON THE TABLE





FREE AND ARTY VOLUMES THAT ADAPT
TO THE HAND NATURALLY, MELTED LINES
THAT FLOW THROUGH THE TABLE BRINGING
CREATIVITY TO THE DINNING SETTINGS



Chef: Israel Ramos
Photography: Mikel Ponce



JELLY COLLECTION

- Available in porcelain matt finish
- Available in porcelain glazed finish



Jelly Dinner

Matt: 16012
Glazed: 16002
29 x 23 x 2



Jelly Deep

Matt: 16013
Glazed: 16003
21 x 15.5 x 5 (300ml)



Jelly Super Deep

Matt: 16037
Glazed: 16036
25.5 x 21.5 x 5.5 (350ml)



Jelly Fish Tray

Matt: 16039
Glazed: 16038
46 x 31 x 3

JELLY BELTZ COLLECTION

- Available in black colour clay porcelain



Jelly Glass

Matt: 16016
Glazed: 16006
8.5 x 7.5 x 8 (200ml)



Jelly Side

Matt: 16014
Glazed: 16004
18 x 11 x 2



Jelly Mini Bowl

Matt: 16015
Glazed: 16005
14 x 9 x 4.5 (100ml)



Jelly Platter

Matt: 16011
Glazed: 16001
37.5 x 19 x 2



Jelly Jar Beltz

16028
11 x 9 x 22 (1L)



Jelly Medium Jar Beltz

16035
7.5 x 6 x 16.5 (400ml)



Jelly Mini Jar Beltz

16027
6 x 4.5 x 12 (150ml)



Jelly Super Mini Jar Beltz

16032
5 x 4.5 x 7.5 (50ml)



Jelly Jar

Matt: 16018
Glazed: 16008
11 x 9 x 22 (1L)



Jelly Medium Jar

Matt: 16034
Glazed: 16033
7.5 x 6 x 16.5 (400ml)



Jelly Mini Jar

Matt: 16017
Glazed: 16007
6 x 4.5 x 12 (150ml)



Jelly Super Mini Jar

Matt: 16031
Glazed: 16030
5 x 4.5 x 7.5 (50ml)



Jelly Cutlery Base

Matt: 16019
Glazed: 16009
6.5 x 2.5 x 0.8



Jelly Glass Beltz

16026
8.5 x 7.5 x 8 (200ml)



Jelly Cutlery Base Beltz

16029
6.5 x 2.5 x 0.8



GOCHI

FUNKY FAMILY MEMBERS





GOCHI REPRESENTS OUR MOST AMUSING
COLLECTION WHICH IS COMPOSED BY
SEVERAL FAMILY MEMBERS WITH GRACEFUL
CHARACTERS AND PECULIAR SILHOUETTES





Photography: Inés Garb



GOCHI COLLECTION

· Available in porcelain matt finish



Mum

15004
D 21, H 6,5



Dad

15003
D 15,5, H 10,5



Girl

15002
D 12,5, H 7,5



Baby

15001
D 8, H 4 cm



Twins

15007
24,5 x 12 x 9,5



Uncle

15006
D 15 H 9,5 (100ml)



Puppy

15005
10 x 9,5 x 7



Chef: Dani Lomana
Photography: Mikel Ponce

THE TABLET

A UNIVERSAL SET THAT FITS WORLDWILDE FOOD





THE TABLET COLLECTION

· Available in porcelain matt finish



The Tablet

14001
25 x 20.5 x 1.5



The Pot

14002
15.5 x 14.5 x 9 (500ml)



The Nest

14003
12 x 10 x 8.7 (150ml)



The Board

14005
10 x 31.5 x 3



The Ball

14004
7 x 7 x 7.7 (50ml)



The Super Ball

14009
9.5 x 9.5 x 12 (100ml)



The Saucer

14006
16 x 17.8 x 2.2



The Plate

14007
22.2 x 25 x 2.3



The Platter

14008
35.5 x 23.5 x 2.2



Chef: Carito Lourenço
Photography: Mikel Ponce

SHELL LINE

ERGONOMIC AND DELICATE ESSENTIAL ELEMENTS



THE BEAUTY AND SENSUAL DESIGN OF
ITS ELEMENTS ALLOWS A WIDE RANGE
OF USES WHETHER TRADITIONAL CUISINE
OR THE MOST MODERN CONCEPTUAL
PRESENTATIONS







SHELL LINE COLLECTION

- Available in porcelain matt finish
- Available in porcelain glazed finish



Shell Super Dinner

Matt: 12019
Glazed: 12009
31.5 x 30 x 2.5



Shell Dinner

Matt: 12011
Glazed: 12001
27.5 x 28.5 x 2.5



Shell Deep

Matt: 12012
Glazed: 12002
25 x 26 x 6



Shell Dessert

Matt: 12014
Glazed: 12004
19.5 x 20.5 x 4



Shell Salad

Matt: 12013
Glazed: 12003
21.5 x 22 x 7.5 (500ml)



Shell Ramen

Matt: 12015
Glazed: 12005
18.5 x 19.5 x 8.5 (800ml)



Shell Ceviche

Matt: 12018
Glazed: 12008
21 x 22 x 5.5 (350ml)



Shell Ice Cream

Matt: 12017
Glazed: 12007
13 x 13.5 x 6.5 (250ml)

SHELL LINE BELTZ COLLECTION

- Available in black colour clay porcelain



Shell Super Dinner Beltz

12029
31.5 x 30 x 2.5



Shell Dinner Beltz

12021
27.5 x 28.5 x 2.5



Shell Salad Beltz

12023
21.5 x 22 x 7.5 (500ml)



Shell Ramen Beltz

12025
18.5 x 19.5 x 8.5 (800ml)



Shell Ceviche Beltz

12028
21 x 22 x 5.5 (350ml)



Shell Ice Cream Beltz

12027
13 x 13.5 x 6.5 (250ml)



Chef: Dani Lomana
Photography: Aitor Ortiz

YAYOI

NATURE INSPIRED PIECES







LOGICAL AND NATURAL PIECES DESIGNED
TO CREATE YOUR OWN TABLE SETTING IN A
COLLECTIVE OR INDIVIDUAL WAY.
YAYOI INSPIRES A HEALTHIER WAY OF EATING:
“LESS QUANTITY & MORE VARIETY”



YAYOI COLLECTION

- Available in porcelain matt finish
- Available in porcelain glazed finish



Yayoi Superflat

Matt: 11016
Glazed: 11006
26 x 24.5 x 4



Yayoi Flat

Matt: 11014
Glazed: 11004
23 x 20 x 3.5



Yayoi Deep

Matt: 11013
Glazed: 11003
19 x 16 x 4



Yayoi Side

Matt: 11012
Glazed: 11002
14 x 11 x 3



Yayoi Appetizer

Matt: 11011
Glazed: 11001
10 x 6 x 3.5 (15ml)



Yayoi Bowl

Matt: 11017
Glazed: 11007
20.5 x 14 x 7 (430ml)



Yayoi Board

Matt: 11018
Glazed: 11008
33.5 x 12 x 3.5



Yayoi Set

Matt: 11015
Glazed: 11005

YAYOI BELTZ COLLECTION

- Available in black colour clay porcelain



Yayoi Superflat Beltz

11026
26 x 24.5 x 4



Yayoi Flat Beltz

11024
23 x 20 x 3.5



Yayoi Deep Beltz

11023
19 x 16 x 4



Yayoi Side Beltz

11022
14 x 11 x 3



Yayoi Appetizer Beltz

11021
10 x 6 x 3.5 (15ml)



Yayoi Bowl Beltz

11027
20.5 x 14 x 7 (430ml)



Yayoi Board Beltz

11028
33.5 x 12 x 3.5



Yayoi Set Beltz

11025
23 x 20 x 6



Photography: Kathrin Koschitzki

JOMON

OUR ICONIC DESIGN





Chef: Dani Lomana
Photography: Mikel Ponce





GOING BACK TO OUR ORIGINS WITH A PURE
ESSENTIAL FORM, JOMON IS A KIND OF
SHELL WHICH CAN BE HELD IN YOUR HAND
TO EAT FREELY: STANDING, SITTING AT THE
TABLE OR LYING DOWN



Chef: Carito Lourenço
Photography: Mikel Ponce





JOMON COLLECTION



Jomon Mini White

10201
10 x 8 x 5



Jomon Mini Black

10206
10 x 8 x 5



Jomon Mini Gold

10204
10 x 8 x 5



Jomon Mini Silver

10205
10 x 8 x 5



Jomon Mini Beltz

10207
10 x 8 x 5



Jomon S White

10301
14 x 11 x 4



Jomon S Black

10306
14 x 11 x 4



Jomon S Gold

10304
14 x 11 x 4



Jomon S Silver

10305
14 x 11 x 4



Jomon S Beltz

10307
14 x 11 x 4



Jomon L White

10501
18 x 14 x 9



Jomon L Black

10506
18 x 14 x 9



Jomon L Gold

10504
18 x 14 x 9



Jomon L Silver

10505
18 x 14 x 9



Jomon L Beltz

10507
18 x 14 x 9

JOMON TRAY COLLECTION



Jo 1 Porcelain

Matt: 20111
Glazed: 20101
7 x 8 x 1



Jo 1 Bamboo

20201
7 x 8 x 1



Jo 2 Bamboo

20202
29 x 10 x 1



Jo 5 Bamboo

20203
29 x 20 X 1



Jo 8 Bamboo

20204
44 x 20 x 1



Jo 12 Bamboo

20205
52 x 22 x 1

FLY IS THE ULTIMATE STYLISH COFFEE, WITH A FREE HANDLE DESIGN
THAT ALLOWS THE USER TO FEEL THE WARM TEXTURE AND VOLUME
OF THE PORCELAIN SHAPE FOR A PLEASANT EXPERIENCE



FLY
STYLISH COFFEE



FLY COLLECTION

· Available in porcelain matt finish (inside glazed)



**Fly 60
Cup & Saucer**

13011



Fly 60 Cup

13013
D 6.5 H 7



Fly 60 Saucer

13014
D 9 H 2



**Fly 140
Cup & Saucer**

13012



Fly 140 Cup

13015
D 9 H 8



Fly 140 Saucer

13016
D 11 H 2

· Available in porcelain glazed finish



**Fly 80
Cup & Saucer**

13001



Fly 80 Cup

13003
D 8.5 H 5.4



Fly 80 Saucer

13004
D 13 H 2



**Fly 180
Cup & Saucer**

13002



Fly 180 Cup

13005
D 9.5 H 7.5



Fly 180 Saucer

13006
D 15.5 H 2



Fly Jug

13017
14.5 x 8.5 x 11 (170ml)





RAMA

ERGONOMIC AMBIDEXTROUS DESIGN







RAMA COLLECTION JOINS FUNCTIONALITY AND INNOVATION WITH A FRESH AND BRAVE APPROACH INTO THE CUTLERY FIELD. FOLLOWING OUR BRAND VALUES, THIS COLLECTION HAS SPECIFICALLY STUDIED EVERY DETAIL OF THE CUTLERY USE IN BOTH RIGHT AND LEFT HANDS

RAMA COLLECTION SILVER MATTE

SS 18/10 (Hot treated twice) | Material thickness: 7.0 mm | Satin Polish



Rama Fork

60001
21.5 x 3 x 2 cm



Rama Spoon

60002
21 x 4.5 x 2 cm



Rama Knife

60003
23.5 x 2.5 x 0.7 cm



Rama Gastro Spoon

60007
15.5 x 3. x 1.5 cm



Rama Dessert Fork

60005
17 x 2.5 x 1.3 cm



Rama Dessert Spoon

60004
16.5 x 3.5 x 1.3 cm



Rama Dessert Knife

60006
18 x 2.3 x 0.5 cm



Rama Coffee Spoon

60008
11 x 2 x 0.5 cm

RAMA COLLECTION BLACK MATTE

SS 18/10(Hot treated twice) | Material thickness: 7.0 mm | Satin Polish + Titanium Coating



Rama Fork

60011
21.5 x 3 x 2 cm



Rama Spoon

60012
21 x 4.5 x 2 cm



Rama Knife

60013
23.5 x 2.5 x 0.7 cm



Rama Gastro Spoon

60017
15.5 x 3. x 1.5 cm



Rama Dessert Fork

60015
17 x 2.5 x 1.3 cm



Rama Dessert Spoon

60014
16.5 x 3.5 x 1.3 cm



Rama Dessert Knife

60016
18 x 2.3 x 0.5 cm



Rama Coffee Spoon

60018
11 x 2 x 0.5 cm

PROJECTS WE LOVE



· Four Season Hotel, Madrid



· Gaston Acurio, Peru



· Catering Potel et Chabot



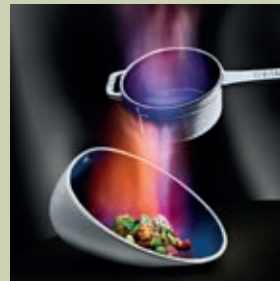
· Shangri-La Hotel, Paris



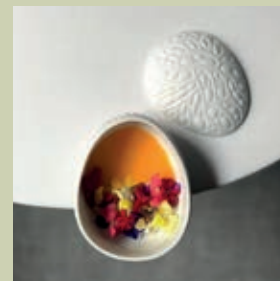
· Mandarin Oriental Hotel, Geneva



· Gordon Ramsay ***, London



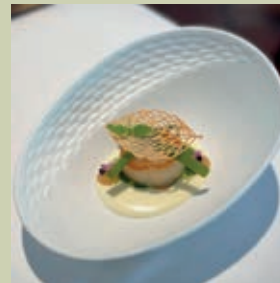
· Arzak ***



· The Poblet by Quique Dacosta **



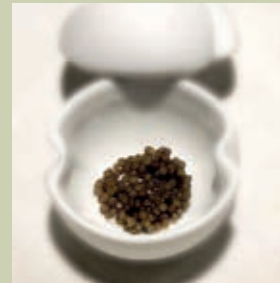
· Chateau de la Chevre d'Or **



· Kokotxa Restaurant *



· Disfrutar ***



· Asador Etxebarri *



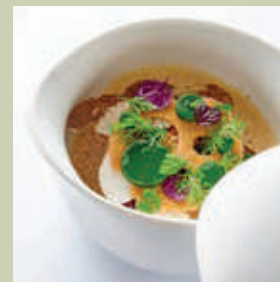
· Armani Ristorante *



· Michel Bras **



· Fondation Louis Vuitton



· Park Hyatt, Paris *

TOP RESTAURANTS

Gordon Ramsay *** *UK*
 Sketch by Pierre Gagnaire *** *UK*
 Petrus By Gordon Ramsay * *UK*
 Anne Sophie Pic *** *France*
 Eric Frechon *** *France*
 Alain Ducasse *** *France*
 La Reserve Le Gabriel *** *France*
 Michel Bras ** *France*
 Maison Rostang ** *France*
 Château de La Chèvre d'Or ** *France*
 David Toutain ** *France*
 Py R ** *France*
 La Mere Brasier ** *France*
 Da Vittorio *** *Italy*
 Seta by Antonio Guida ** *Italy*
 Madonnina del Pescatore ** *Italy*
 Santa Elisabetta ** *Italy*
 Celler de Can Roca *** *Spain*
 Disfrutar *** *Spain*
 Martin Berasategui *** *Spain*
 Quique Dacosta *** *Spain*
 Arzak *** *Spain*
 Azurmendi *** *Spain*
 Asador Etxebarri * *Spain*
 Alma ** *Portugal*
 Lab by Sergi Arola * *Portugal*
 Ó Balcão * *Portugal*
 Da Vittorio - St. Moritz ** *Switzerland*
 Kong Hans Kælder ** *Denmark*
 Thevar ** *Singapore*
 Alma by Juan Amador * *Singapore*
 Jose Andres *USA*

LUXURY HOTELS

Four Seasons
 Mandarin Oriental
 The Peninsula
 Rosewood
 Shangri-La
 Oetker Collection
 Royal Mansour
 Fairmont
 St Regis
 Ritz Carlton
 Raffles
 The Oberoi
 Sofitel
 Kempinski
 Westin
 W Hotels
 JW Marriott
 M Gallery
 Le Meridien
 Swissotel
 Editions
 Renaissance
 Park Hyatt
 The Fives Hotels
 Gran Melia
 Marina Bay Sands
 Royal Hideaway
 Hilton
 Waldorf Astoria
 Conrad Hotels
 InterContinental

BRAND EDITIONS

Champagne Krug
 Fondation Louis Vuitton
 Mango x Victoria Beckham
 5 Jotas by Osborne
 Patchi Chocolate
 Natuzzi
 Cafe Vogue
 Barbie Dream Lounge

DEPARTMENT STORE

BHV Le Marais *Paris*
 La Rinascente *Milan*
 Club 21 *Singapore*
 Selfridges *London*
 Natuzzi *Worldwide*
 MOHD *Milan*

MUSEUM SHOP

Guggenheim Museum *Bilbao*
 El Prado *Madrid*
 Casa Batlló *Barcelona*
 Museo Miro *Barcelona*

CONCEPT STORE

Merci *Paris*
 Isolee *Madrid*
 Cutipol *Lisboa & Porto*
 Sel & Poivre *Libanon*
 Bado *New York*
 Kmh Home *Florida*

PORCELAIN CARE INSTRUCTIONS

DISHWASHER | MICROWAVE | OVEN | EASY CLEAN

Suitable for Hospitality Requirements

· *Porcelain matt finish (Biscuit Porcelain)*

Our matt porcelain is fired up to 1320° C, unglazed, in its pure state with great properties of hardness. Food stains will be always superficial, as it is a vitrified material, they will be easily removed before the dishwasher rubbing with soap and a green scourer (e.g Scotch Brite).

We suggest, from time to time, to clean the pieces with a whitening powder or an oven cleaner to keep the white and brightness of the porcelain.

Our porcelain, very difficult to be chipped, is a really long lasting material: professional dishwasher, microwave and oven safe.

· *Care for gold and silver finish, Jomon collection*

Professional dishwasher safe, but not suitable for microwave or oven.

We recommend to place a dividing paper between items when stacked. Silver and gold finishes can be damage because of the hardest of the external matt porcelain when stacked.



Photography: Gaizko Fanarraga

ACKNOWLEDMENTS

Thank you to all the chefs who has been involved in the making of this book. We are grateful for their patience and their exquisite ability to adapt their cuisine to our designs.

We would also like to thank to the photographers who throughout our 10 years of professional career, have been able to work in such diverse scenarios as improvised kitchens, country houses, concept stores, art galleries... offering their great degree of commitment and their excellent work. Each photo session has been a discovery not only of the great professional but also of the person we have inside us, as shown by the good moments we have spent during and after the shootings.

Finally, we would like to specially thank the Cookplay team for positioning the brand in such an honourable state that has only been possible through the enthusiastic and encouraged day by day work.

Creative director Ana Roquero / Designed by Sara Roquero

Copyright © 2025 Cookplay

All rights reserved. No part of this publication may be reproduced or transmitted in any form or by any means, electronic or mechanical, including photography, recording or any information storages and retrieval system without permission in writing from publisher.

WWW.COOKPLAY.EU